

Little Cotswold Walks



1. Birdlip & Beyond 

RR Gordon

A series of short, circular walks around Cotswold villages – ending at pubs!
Covering Birdlip, Elkstone, Brimpsfield, Fostons Ash, Miserden

You can also download other booklets in the series from www.rrgordon.com
including 2. Painswick Valley, 3. Toadsmoor Valley,
4. Frome Valley, 5. The Falcon - Painswick, 6. Stroud & Surrounds

Little Cotswold Walks
Book 1. Birdlip & Beyond 2016 Edition
Copyright © 2016 by RR Gordon

RR Gordon is the author of the best-selling Gull Rock
No 1 on the Mystery Series bestseller list on Amazon



**Cotswold Paving
& LANDSCAPING**

Multi Award Winning Driveways and Patios

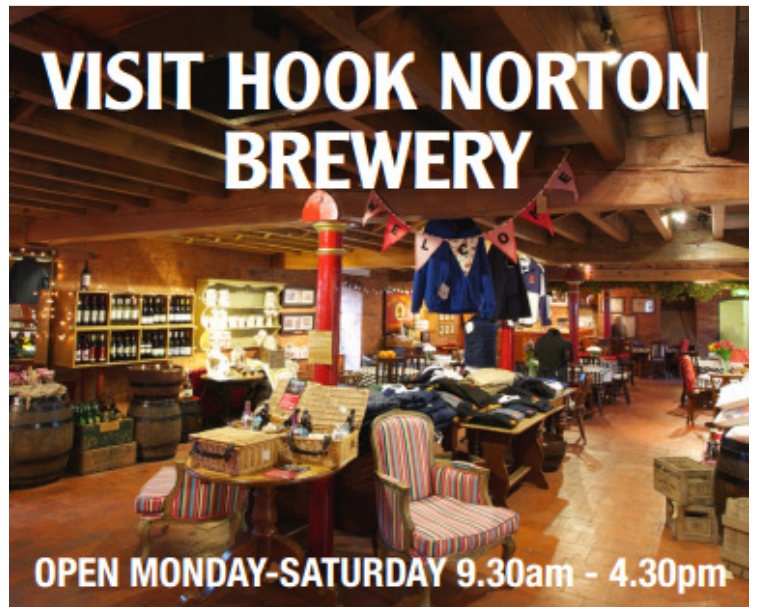
"Our reputation is your peace of mind"

Visit our show garden next to Obsidian,
Fairview Road, Cheltenham, GL52 2EJ



Cheltenham: 01242 649064
Gloucester: 01452 864030
Mobile: 07887 528841

www.cotswoldpaving.co.uk
sales@cotswoldpaving.co.uk



Come and visit our unique brewery. There's plenty to see on a brewery tour, in our museum, or visit our shire horses. Taste our award winning beers or linger a little longer in our café and gift shop.

Call us on 01608 730384 or visit www.hooky.co.uk to find out more about Hook Norton Brewery.



Brewery Lane, Hook Norton,
Banbury, Oxon, UK, OX15 5NY

GARDENS BY:

Keltie & Clark

www.keltieandclark.co.uk

Contact details;
gardens@keltieandclark.co.uk
01242539510
07920147374
www.keltieandclark.co.uk



Garden design, landscaping
and garden maintenance

Every garden has a story; the landscaping its narrative, the plants its characters. A beautiful garden will be more; engaging, imaginative and developing over time. Each garden is different. Some need building from scratch; some short term solutions; others long term design and ongoing maintenance. Gardens by Keltie and Clark design their bespoke gardens with this at the forefront. From the initial design, through the build, planting and ongoing aftercare, their focus is on the developing garden and its ongoing story.

Introduction.

Sometimes I like a long, strenuous hike up an imposing hill but occasionally it's nice to just potter round a lovely little Cotswold village looking at the nice houses. This book concerns itself with the latter.

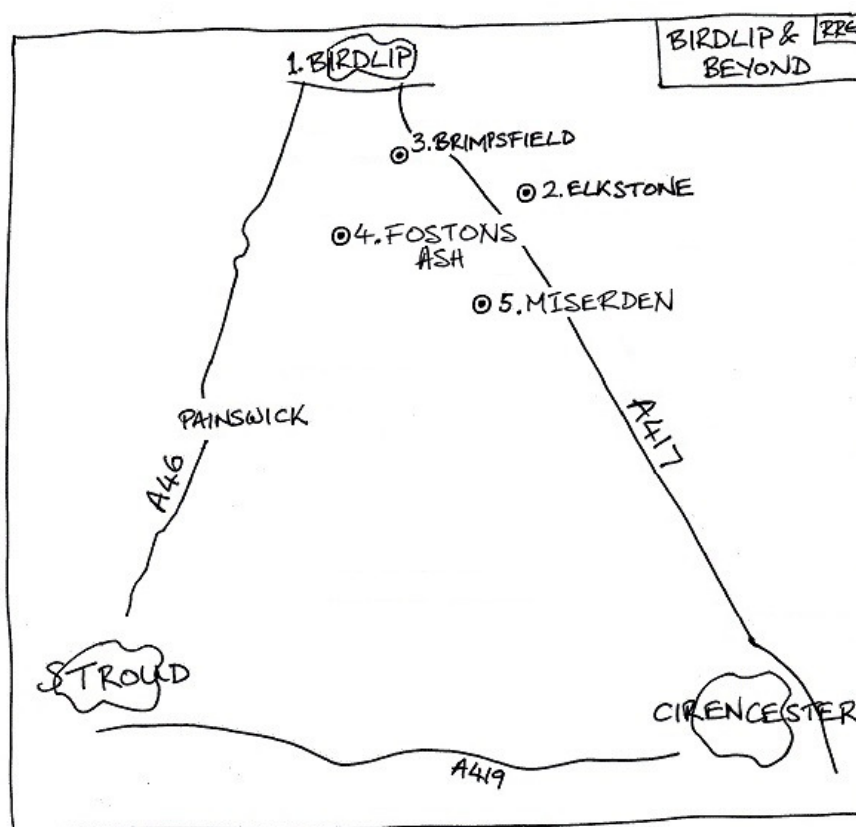
Each walk has been hand-crafted by me, my wife Nicky and our dog Daisy. Our combined objectives were:

- **A nice village:** it's always interesting to see how the other half lives and we've tried to select some places where you can look at some nice houses and discuss whether you would like to live there (by the way, one of the walks will take you past our house!)
- **Circular walks:** we've tried to come up with circular (ish) walks, but there might be some interesting side paths which we've suggested which require returning by the same route.
- **A good pub:** and why not? In my mind, each of these walks operates as follows: you wake up late on a Sunday morning, have an unhurried, indolent breakfast, drive over to the suggested parking spot, potter round for 30-45 minutes and then have lunch at the nearest pub. Beautiful. Where possible we've even suggested that you park at the pub.
- **Some exercise for Daisy:** uppermost in Daisy's mind was her desire that each walk should contain a stretch where she could be off the lead. This wasn't always possible with walks around villages but nevertheless she pronounced herself happy with every walk included in this book – and all the pubs are happy to have dogs (at time of printing!).

This first book, entitled *Birdlip & Beyond*, contains a number of walks in the Birdlip – Stroud – Cirencester triangle. Daisy absolutely insists that we regularly re-trace the walks in case anything has changed, but if you spot any errors then please let me know – we will both be mortified and will correct the error immediately and re-publish on www.rrgordon.com

Rod Gordon

rod@rrgordon.com



1. Birdlip.

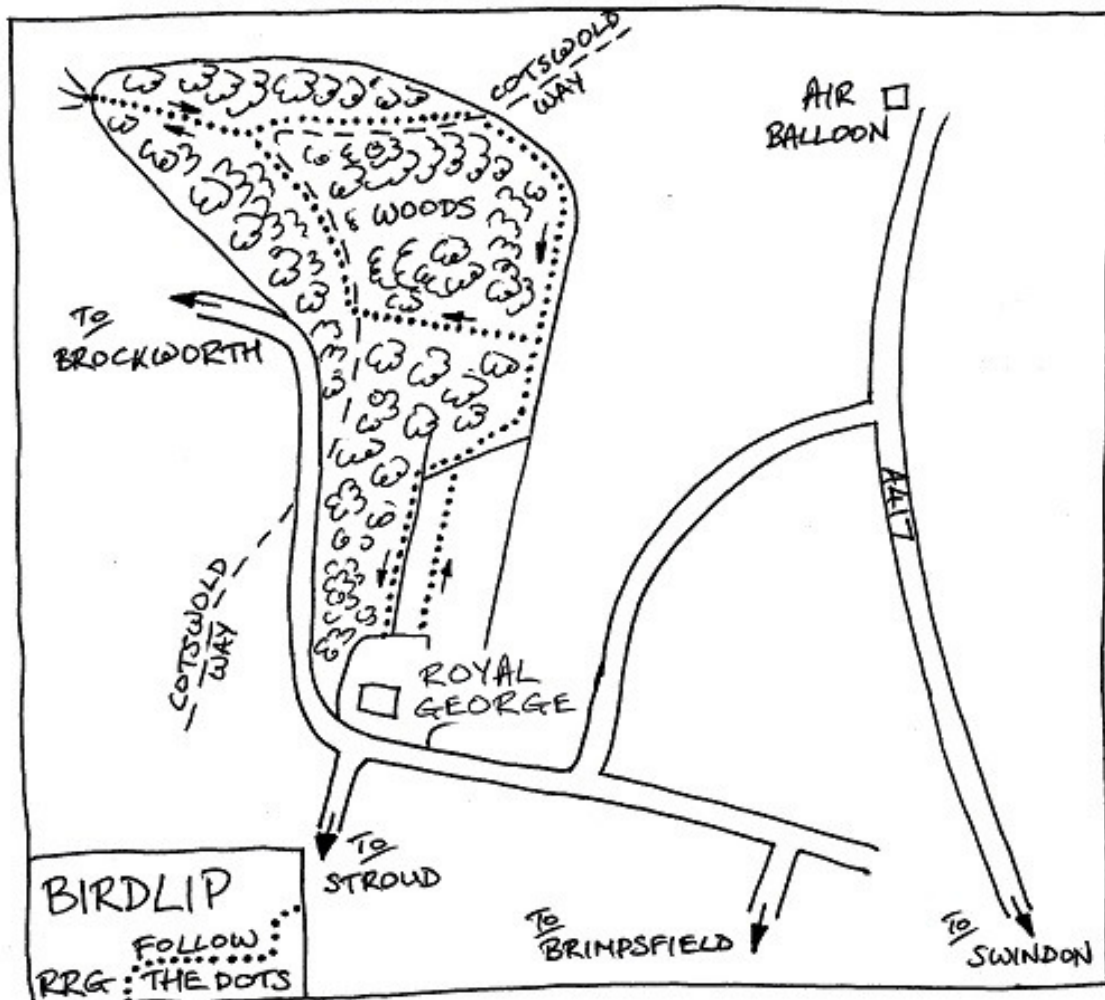
Rod's Rating	 <p>A hidden walk that is tucked away in the woods behind the Royal George – and, as I'm fairly careful with money, I do like some of the meal deals at the pub!</p>
Daisy's Rating	 <p>Daisy enjoys foraging through the trees on this walk – and it tires her out nicely so she sits quietly in the pub afterwards.</p>
Is it a circular walk?	Yes, with a nice viewpoint.
Pub	The Royal George, Birdlip, GL4 8JH https://www.oldenglishinns.co.uk/our-locations/the-royal-george-hotel-birdlip
How long did it take?	30 minutes
What shoes should I wear?	No need for walking boots unless it's raining; paths in woods are fairly dry most of the year

WHERE TO PARK:

In the car park of the pub. Go through the archway & then straight ahead to park by the small grassy area.

THE WALK - In summary:

Into the woods, bear left, walk to a viewpoint over the Severn valley and then circle back from the right.



In detail:

- **Go straight across small meadow** from car park, there is a well-trodden path across the grass
- Enter woods by walking across the roots of a large beech tree
- **Turn right** onto the footpath
- **Keep right**, following the tumbledown Cotswold stone wall at edge of the woods
- **Turn left** when you reach a metal gate on right (which leads into a field), the path leads gently downhill
- Go through a cutaway gully
- **Turn right** at a T-junction of footpaths, you are now turning onto the northbound Cotswold Way (as well as the Gustav Holst Way and a Crickley Hill walk)
- Path follows edge of the escarpment, the land falling away to your left through trees to the Severn valley
- **Stay left** at the next Cotswold Way signpost and you will see, through the trees, that you are walking out along the left-hand side of a promontory
- **Turn left** at the tall (6 ft) oak Cotswold Way signpost, the path goes down more steeply here
- **Keep right** to go around a tree and alongside a fence on the right
- **Go over a stile** with a nice gap for dogs
- Emerge from the trees onto the tip of the promontory and walk forward a few yards to a flat area to look at the view of the Severn valley, the Malverns in the distance in front of you and Crickley Hill to the right

NOW BACK TO THE PUB!

- **Go back to tall oak Cotswold Way signpost** & bear left, ie take other path along the other side of the promontory (*the signpost points you in the direction of Crickley Hill 1¾*)
- **Continue for a few hundred yards**, follow footpath along edge of woods, Crickley Hill in distance to left
- Go past metal gate where you turned earlier; continue straight on following wall edging the woods
- Go past the beech tree where you entered woods (you may not even notice it) and continue on footpath
- The path curves left and leads you between a Cotswold stone wall on the left (the small meadow the other side of it) and a steep drop on your right
- Follow this path and when you are level with the pub car park there will be a path to your left
- Enjoy a drink at the pub! They also do teas & coffees and have a lovely garden

If you would like to extend the walk and saunter around Birdlip, can I suggest that you turn left out of the pub car park and walk straight down to the village school (where our children went); you can turn left here and walk up the track to the cricket field; unfortunately you have to return by the same route, but it's a pleasant stroll.



SOMETHING INTERESTING:

In medieval times Birdlip was spelt 'Brydelep' which may have come from two Old English words — 'bridd' — a bird, and 'hleþ' — a leap.

Birdlip is well-known in archaeology circles for the Birdlip Mirror, which is now housed in Gloucester Museum. In 1879 workmen discovered three skeletons in a quarry between Crickley and Birdlip overlooking the Vale of Gloucester. With the bones, were some amazing Iron Age artefacts. The most important object is a handheld mirror of bronze. The front of this was originally highly polished for reflections, but the rear is decorated with flowing patterns worked into the metal. It is one of the finest items of Celtic art to survive in Britain and perhaps the finest example housed outside a national museum.

2. Elkstone.

A delightful circular walk around a quiet little Cotswold village with a splendid Norman church.
See www.elkstonevillage.com for details of their annual Garden Open Day (normally in June).

Rod's Rating	 An interesting footpath and a nice quiet road through the village.
Daisy's Rating	 Daisy loves every walk, of course, and this one had some great smells (of pheasants!) but she had to stay on the lead the whole time. There were a couple of stiles which might be tricky for older dogs. However instead of following the footpath on the first stage of the walk, you could simply go up the road, which isn't too busy.
Is it a circular walk?	Yes
Pub	The Highwayman, 2 minutes drive from the end of the walk Beech Pike, Elkstone, Cheltenham, Gloucestershire GL53 9PH http://www.the-highwayman-inn.co.uk <i>Alternative: The Green Dragon, Cowley</i>
How long did it take?	30-35 minutes; plus 5-10 minutes looking at the church and the churchyard
What shoes should I wear?	No need for walking boots unless it's raining; only 5 minutes across fields and it wasn't muddy

WHERE TO PARK:

Elkstone Church car park, Elkstone, Gloucestershire, GL53 9PD

(room for 4 cars; alternative parking is on the road outside Elkstone village hall; this is halfway round the walk – look for "village hall" below and follow instructions from there)

QUICK DIRECTIONS TO THE PARKING SPOT:

(From the roundabout at the Birdlip end of the A417 dual carriageway)

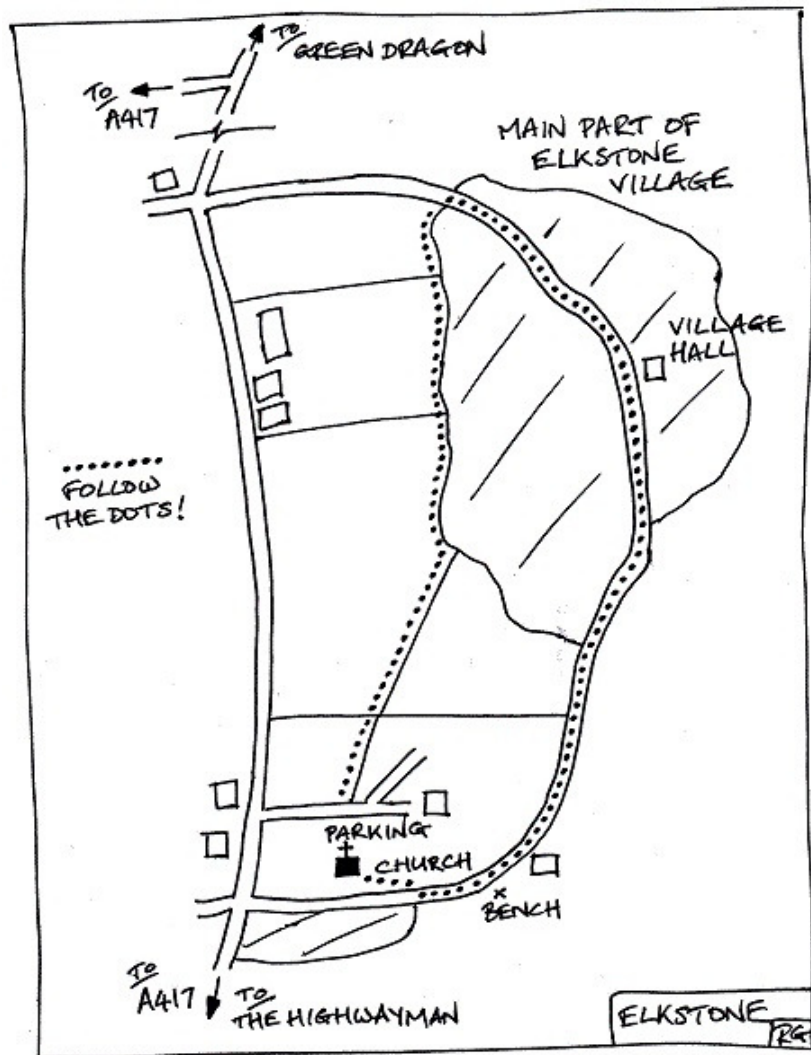
- Take the exit from the roundabout signposted Brimpsfield
- Go down the slope, to a T-junction
- Turn left
- Go under bridge (under the A417)
- Turn immediately right and drive parallel to Swindon-bound carriageway of A417 for a few hundred yards
- Road then leaves A417 and goes past a couple of farm buildings on the right
- Ignore small turning on the right
- Go past a couple of houses to a T-junction
- Turn right
- Ignore turning on left into Elkstone village
- After another few hundred yards turn left into Church car park



This is a gravel drive leading to a large house in front of you. After thirty yards there is parking on the right for about 4 cars.

THE WALK - In summary:

Follow the public footpath over a few stiles until you reach the road running through Elkstone village. Turn right, follow the road through the village for a good way, circling back towards the church. Go through a small gate, through the churchyard and back to the small car park.



In detail:

- Assuming you parked facing the church, the walk starts behind you, ie with the big house on your right
- Walk a few steps along the gravel drive
- Go over the stile over the iron fence on the left (you can also open the farm gate next to the stile)
- Walk along the edge of the field with the iron fence on your right
- Go over weird stone stile, with steps and fence-like construction, into next field
- Walk along the edge of the field with the dry stone wall on your right
- Climb over high wooden stile straight ahead (with dog gate on the right) to stay on footpath
(do not go down the wide restricted by-way on your right)
- Walk along public footpath between a link fence on left (with conifers) and a dry stone wall on your right
- Go straight across a gravel drive which leads to a house on the left (Elysian House)
- Walk along between the two dry stone walls and over a stile made from a single large stone:
- Continue along the footpath with dry stone wall on the right and metal link fence on the left:



- Climb over another large stone stile and turn left to walk alongside a hedge around a garden
- Turn right around the same garden
- Go through an iron gate and turn right onto the road
- Follow the road all the way through the village as it slowly circles back round to the church
- At the village hall, don't be tempted to turn left, keep to the road with the hall on your left hand side
- About 30-40 yards after the village hall there is a Public Footpath to the left running across the front of a house up a grass track; at the end of the track there is an old metal gate leading into a field
- Walk up the right edge of the field with a road just below you
- At the top of the field go through a new metal gate and turn right to follow a Byway (farm track) between two fields heading toward some woods
- Turn right before the woods following the farm track back towards the village (do not go straight on)
- Go through a gateway (without a gate!) bearing slightly left; walk between two barbed wire fences; church is ahead of you
- Turn right at a 3-way intersection of footpaths to enter a field
- Walk down the slope and up the other side (with a beautifully landscaped garden to the left)
- Go through an old metal gate to re-join the road; **turn left** (you are at a house called The Millhouse)

- Just a few yards further on, you come to a bench in a grassy area on the left (just after The Millhouse on left as road bends to right and starts uphill slightly)

- Veer right here up a short grassy path on the opposite side to enter the churchyard via small back gate:



- The church is open during the day and you are welcome to look around and – please note – a small door behind the pulpit leads up a narrow spiral staircase which emerges into a small chamber directly above the chancel; the chamber features a dovecote

- Return to the car park through the main gate

OK, HOW DO I GET TO THE PUB?

Simply turn left out of the Church car park.

After 2 minutes the road ducks under the A417 and The Highwayman is on your left.

SOMETHING INTERESTING:

The Legend Of The Green Dragon

From www.elkstonevillage.com

Elkstone church is the Church of St John the Evangelist.

At nearly 1000 feet above sea level, it is the highest church in the Cotswolds. Described as 'a prayer in stone', it is famed for its Norman architecture, stone carvings and golden light.

In the stained glass windows, John is shown holding a cup. According to the 'Acts of John' (not in the Bible) John was challenged by the High Priest of the goddess Diana at Ephesus to drink from a poisoned cup as a test of his faith. The potency of the poison was tried out on two condemned criminals, who promptly died. John prayed over the cup, drank & survived unharmed, then restored the two dead men to life.

Down the centuries, artists have solved the problem of how to represent the poisonous liquid by showing a serpent or a dragon, nearly always green, emerging from the cup. This is perhaps what inspired the name of the local pub, The Green Dragon in Cowley.


The original church, begun in 1160, consisted of a nave and chancel, with a central tower above the chancel. This tower either collapsed or was taken down in the 13th century. When re-roofing the chancel, the builders also raised the height of the chancel walls, forming a chamber, reached by a north staircase and used as a columbarium or dovecote, a very rare feature in a church.

The great west tower was built in the early 15th century and the porch is from the 14th century.

The stained glass window in south wall of the chancel was fitted in 1959, the work of W T Carter Shapland.

3. Brimpsfield.

A wiggly walk around a quiet village near Birdlip.

Rod's Rating	 Through the heart of the village, a nice lane between some lovely houses, topped off with a walk up to one of the oldest churches in England past the earthworks of a fort mentioned in the Domesday Book.
Daisy's Rating	 Thumbs up from Daisy – a good couple of sections off the lead.
Is it a circular walk?	In the main, but a there-and-back stretch up to the church
Pub	No pub in the village but three to choose from within 2 miles drive: The Golden Heart, Nettleton Bottom http://www.thegoldenheart.co.uk The Royal George, Birdlip https://www.oldenglishinns.co.uk/our-locations/the-royal-george-hotel-birdlip The Fostons Ash, on the road from Birdlip to Stroud http://www.food-club.com/fostons-ash.htm All really good and I choose a different one each time.
How long did it take?	30 minutes
What shoes should I wear?	No need for walking boots most of the time. One stretch across a small field and then back along a grassy lane but you only need boots in the middle of winter. The rest of the walk is through the village – or on a concrete footpath up to the church.

WHERE TO PARK:

The local parish council very kindly advertises free parking at:

Brimpsfield Village Hall, GL4 8LD

<http://www.grcc.org.uk/village-hall-database/village-hall/brimpsfield-village-hall>

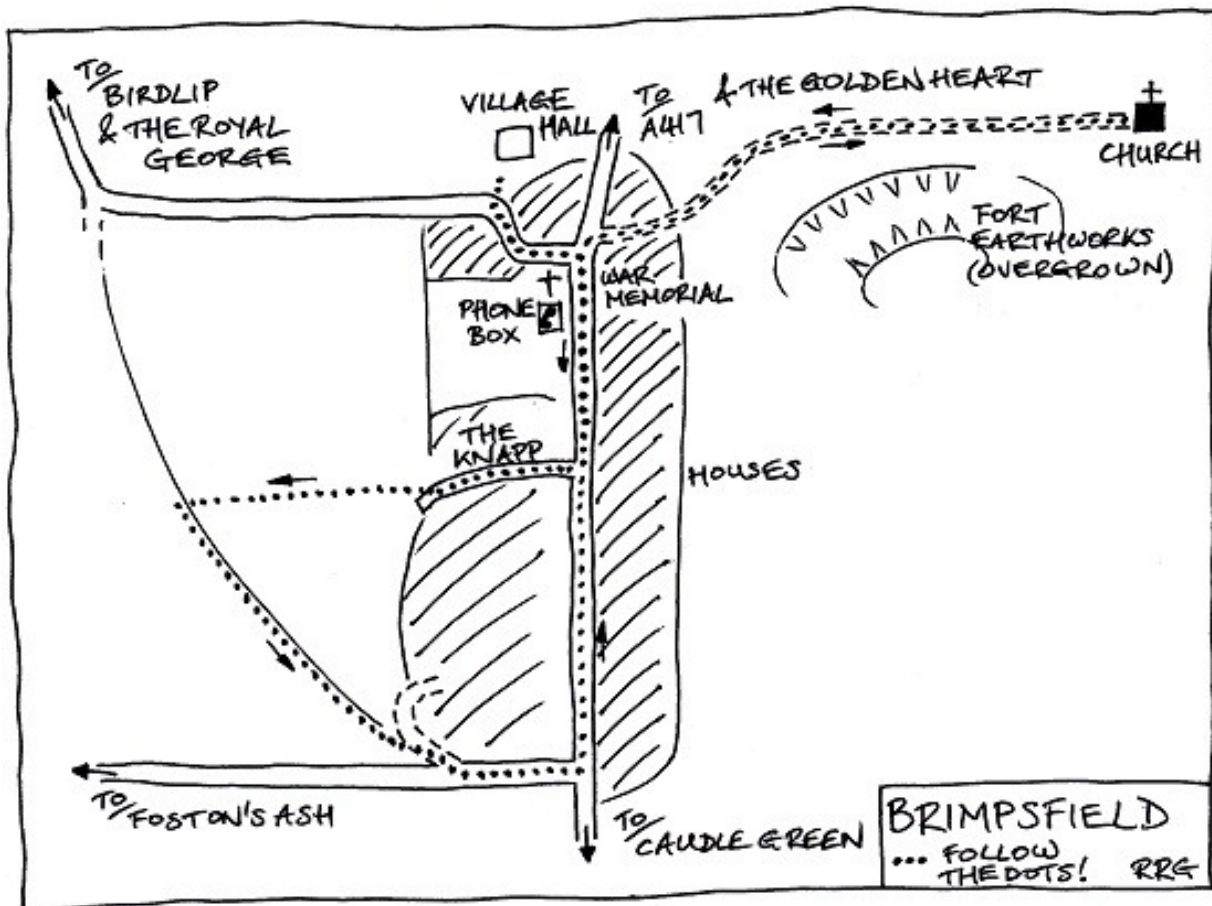
QUICK DIRECTIONS TO THE PARKING SPOT:

(From the Air Balloon roundabout)

- Turn right off the A417 towards Birdlip
- When in Birdlip, turn left and go through the main part of the village (towards the school)
- Just before the school, follow the road round to the right
- Brimpsfield is 1.5 miles along this road, the village hall is on your left as you enter the village

THE WALK - In summary:

Left out of village hall car park, up main village street, off to the right on a nice loop around the back of the houses on the western side of the village, back down the main village street and up to the church.



In detail:

- Turn left out of the village hall car park onto the road
- Follow the road left and then right, keep the phone box on your right
- Turn right up The Knapp, after small field with pigs, donkeys and chickens opposite Brimpsfield House
- At the top of The Knapp, fork right along a small footpath between two dry stone walls
- Go through a wooden gate into an open field, go directly across the field
- Go through the wooden gate at the other side of the field and turn left
- Walk along grassy footpath as it curves left between hedge on your left and wooden fence on your right
(There are sometimes horses in this field from nearby polo farm which stables horses for Sultan of Brunei amongst others; Prince William & Prince Harry have played in polo matches in the next field to the west)
- At the end of the lane, go forward across a short stretch of gravel drive and turn left onto the road
- At the T junction turn left, to go down the main village street
- When you get back to war memorial, turn right and go through a wooden gate, signposted to church
- Follow the concrete footpath straight across a small private field
(normally marked as a golf hole by the enthusiastic owner who can hit the green from the tee every time)
- Look to the right and you will see the overgrown earthworks and remains of Brimpsfield fort
- At the end of the small field go through a small wooden gate next to a cattle grid & into church grounds
- You are welcome to enter the church and look around
(one of the oldest churches in the country & its history is shown on a board inside; a relatively recent addition is the small stained glass window in honour of our former neighbour who fought in the war)
- Return to the road along the same concrete footpath
- Turn right to return to the village hall

OK, HOW DO I GET TO THE PUB?

As I write this, I'm in the mood to go to The Golden Heart, but we frequently go to the Foston's (a bit fancier!) and the George (better parking, extensive menu).

The Golden Heart has won many awards including CAMRA Gloucester Best Country Pub 2014. Nice range of beers and excellent country pub menu.

Turn left out of Brimpsfield village hall car park, left again at the war memorial just round the corner, wiggle along the road for about a mile to the roundabout at the end of the dual carriageway stretch on the A417, turn left and The Golden Heart is on your left after a few hundred yards.

SOMETHING INTERESTING:

There is a small field in the middle of Brimpsfield village, owned by the residents of Brimpsfield house and they keep pigs, donkeys and chickens in the field. The two pigs are big, fat Gloucester Old Spots!

Brimpsfield is mentioned in the Domesday Book as belonging to Osbern Giffard, one of William the Conqueror's "proven companions" who fought with him at Hastings. However the Giffards were a maverick family who chose the wrong side at the battle of Boroughbridge in 1322, after which their castle at Brimpsfield was demolished on the orders of Edward II, although its impressive earthworks remain visible close to the church (on private land).

It was a Giffard who began building Brimpsfield Church and gave it to the Abbot of a Benedictine Convent at Fontenay in Normandy, who established a small priory here. As an alien priory, it was frequently seized by the King in time of war with France and eventually was bestowed on Eton College, which remains one of the Church's patrons to this day.

Brimpsfield Church is located on the edge of a promontory and reached by means of a long footpath across a field. Like many others in lofty locations it is dedicated to St Michael and All Angels.

GARDENS BY:

Keltie & Clark

www.keltieandclark.co.uk

Contact details;

gardens@keltieandclark.co.uk

01242539510

07920147374



www.keltieandclark.co.uk



Garden design, landscaping and garden maintenance

Every garden has a story; the landscaping its narrative, the plants its characters. A beautiful garden will be more; engaging, imaginative and developing over time. Each garden is different. Some need building from scratch; some short term solutions; others long term design and ongoing maintenance. Gardens by Keltie and Clark design their bespoke gardens with this at the forefront. From the initial design, through the build, planting and ongoing aftercare, their focus is on the developing garden and its ongoing story.

4. Fostons Ash.

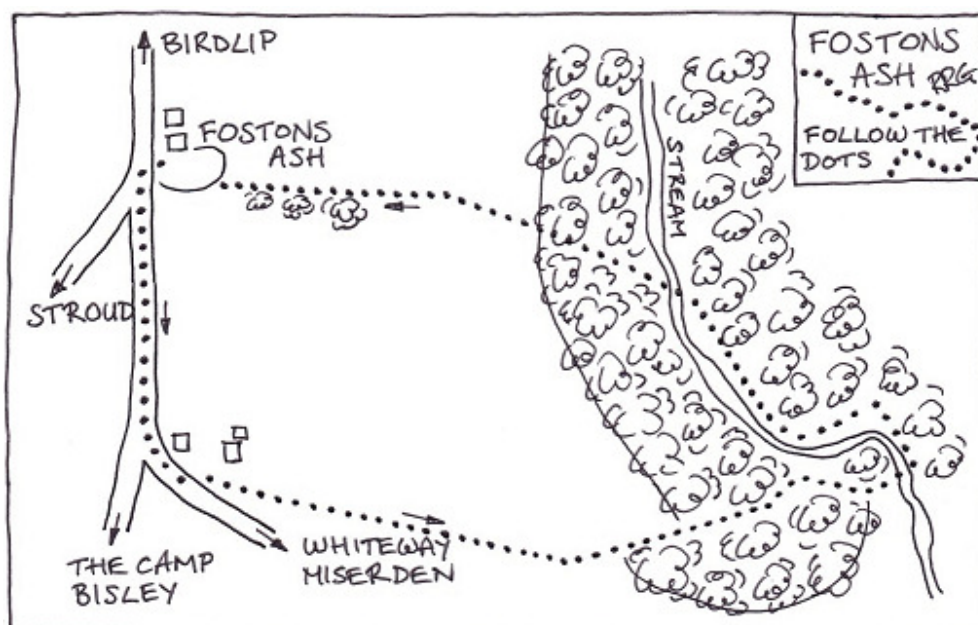
<p>Rod's Rating</p>	 <p>This is meant to be a booklet of walks around Cotswold villages and, as there are no villages on this walk, I can't really give a score higher than three. However I wanted to include a circuit from the Fostons Ash and this is part of a route I've done on my mountain bike a few times – down into the valley behind the pub and back up again. The undulating wolds curve in perfect mathematical arcs and the stream that runs down through the woods at the bottom of the valley, the beginnings of the river Frome, is a picture of Cotswold loveliness.</p>
<p>Daisy's Rating</p>	 <p>The initial few hundred yards is along a busy road but thereafter Daisy was off the lead for the whole of the walk, hunting through the woods and running along the stream bed.</p>
<p>Is it a circular walk?</p>	<p>Yes; actually in my mind it's rectangular!</p>
<p>Pub</p>	<p>The Fostons Ash, on the road from Birdlip to Stroud http://www.food-club.com/fostons-ash.htm</p> <p>Fostons Ash, Slad Road, The Camp, Near Birdlip, Gloucestershire, GL6 7ES</p> <p>More of a bistro than a pub these days, but they certainly do nice food.</p>
<p>How long did it take?</p>	<p>40-45 minutes – and quite strenuous (down into the valley and back up)</p>
<p>What shoes should I wear?</p>	<p>Probably the muddiest walk in the Cotswolds! Even in summer the track alongside the stream is very muddy. Trousers might be advisable for summer as one stretch can become a little overgrown – but not too bad.</p>

QUICK DIRECTIONS TO THE PARKING SPOT (ie to the pub):

Leave Birdlip in the direction of Stroud along the B4070. The Fostons Ash is on left after a couple of miles.

THE WALK - In summary:

Left out of the pub, walk along the road for a few hundred yards, turn left and walk down into the valley, walk up the valley a few hundred yards and then climb back up to the pub.



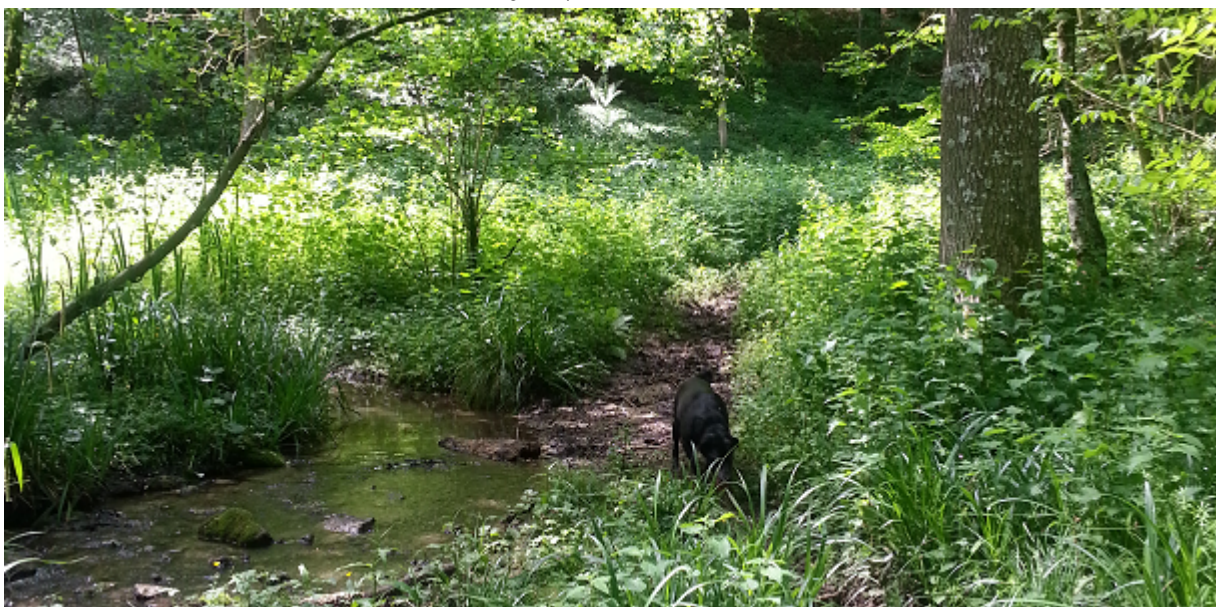
In detail:

The first couple of hundred yards is along the road – sorry!

- Turn left out of the pub car park
- **Immediately left** (sort of straight on actually) along road signposted Whiteway/Miserden & Camp/Bisley
- **Turn left** after 200 yds along the road signposted to Whiteway/Miserden
- **Turn left** onto a Public Bridleway after 50 yds (just after the house, by the sign for Reva Pigs!)
- Walk along the right edge of the field, slightly downhill



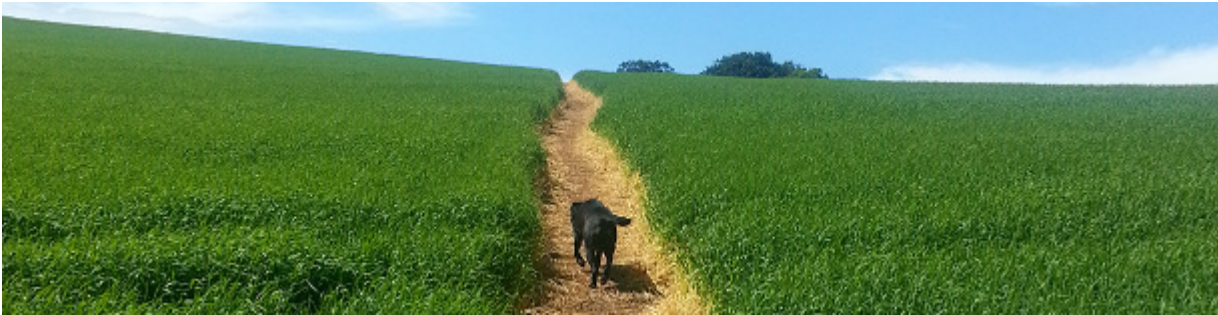
- Go through into the next field, still slightly downhill, heading for a cluster of trees in a fold in the land
- Go through into the next field which rises up to your left (another field rising up to your right)
- Bear right to **enter the woods, but do not go through the wooden gate, instead bear left**, keeping fence to your right (*follow blue Public Bridleway sign*)
- Continue along the edge of the woods (field on left), path goes slightly uphill at first, then slightly downhill
- **Go through a very old wooden gate on your left & follow path steeply downhill** (path curves to the left)
- **Go across the stream at the bottom** – I found it easier to go a few steps to the right where the stream is narrower and there are a few rocks to jump across



- **Once across the stream you need to walk forward 20 yds and then turn left onto a wide track** – choose the way that is least muddy!
- **When you have turned left onto the wide track, follow the track & stream as they go slightly uphill (and upstream)** for around 600 yds
- Fork left down a short track (10 yds) leading to a wooden footbridge over the stream



- The footpath then goes up and to the right
 - Climb back up out of the valley – up, up, up!
 - When you emerge from the woods, the path lead across a field, veering slightly to the right
- I like this area, where the land rises up on either side like the wings of a bird.*



- Head to the other side of the field, aiming for three or four large trees (the pub is just the other side!)
- On the other side of the field there is a gateway in the hedge leading through to another field
- Walk along the track keeping the hedge on your left
- After a few yards you should see the pub emerge on the other side of the trees

The End. Any problems with these directions? Email me at rod@rrgordon.com (also if you liked the walk!)

SOMETHING INTERESTING:

When I was researching the origin of the name of the Fostons Ash I kept coming across references to the fact that it was named after a former turnpike keeper ... and I wondered exactly what a turnpike was ... so here is the explanation in a nutshell:

A network of well-maintained roads was one of the major achievements of 18th century England until they were wound up under General Acts of Parliament between 1873 and 1878.

A turnpike is literally a defensive frame of pikes that can be turned to allow passage of horses, but in this context it refers to a gate set across the road to stop carts until a toll was paid. Turnpikes linked the major centres of population and were normally independently financed (often by trusts) and operated for the benefit of long distance commercial traffic. See <http://www.turnpikes.org.uk> for more information.

A road of some importance, known in its northern part as the Calf Way, is mentioned in documents as far back as the 13th century and it carried traffic from Tetbury through Bisley towards Birdlip. The road was turnpiked between Chalford and Foston's Ash in 1800.

So there you have it. Mr Foston was obviously the gatekeeper of this stretch of toll road – and presumably there was an ash tree here, which is understandable as they are commonplace in this area. Did Mr Foston then start selling beer on the side, I wonder ...?

5. Miserden.

* This walk connects to Caudle Green walk in booklet 4 to make a longer walk – see * in instructions below

Rod's Rating	 Another classic Cotswold village – if you haven't been here before then you really should visit – and a great pub with a lovely outside seating area. We've been doing parts of this walk for years and we love the beautiful landscape of Misarden Park – you can also buy plants at Misarden Park nursery. NB. The park is spelled Misarden but the village is Miserden.
Daisy's Rating	 Daisy always gives high marks for long walks, but didn't go for the maximum as she had to be on the lead most of the time (sheep in most of the fields in Misarden Park). However a couple of dips in the stream on the way round made for a nice refreshing break.
Is it a circular walk?	Yes.
Pub	The Carpenters Arms, Miserden, Birdlip, Glos GL6 7JA http://www.thecarps-miserden.co.uk/ Please note that the lovely village shop also provides hot refreshments and drinks. For example: tea or coffee and bacon sandwiches!
How long did it take?	1 hour 10 minutes – with some steep climbs!
What shoes?	Trainers were fine in summer; walking boots in the winter

WHERE TO PARK: At Carpenters Arms (address above); you can also park on road just opposite the pub.

QUICK DIRECTIONS TO THE PARKING SPOT *(From Birdlip):*

Leave Birdlip on the B4070, heading in the direction of Stroud. Just after Fostons Ash turn left (signposted Whiteway/Miserden and Camp/Bisley). Then turn left after 200 yds (signposted Whiteway/Miserden). The pub is in the centre of the village.

BONUS WALK (SHORTER):

If you just fancy a quick 15-minute walk then opposite the pub, between two houses, is a Public Footpath sign. Follow this footpath for a few hundred yards, turn right when you get to the road, then turn right again to walk back along the tree-lined road back into the village. You can also walk along the raised grass bank, under the trees on the right – the local villagers very kindly mow this stretch.

SOMETHING INTERESTING:

Misarden Park extends to almost 3,000 acres and includes the majority of the village of Miserden. The Estate has been owned by the Wills family since 1913 and includes Achnashellach Estate in Scotland.

Miserden Nursery is open from March to October and specialises in hardy perennial plants.

<http://www.misardenpark.co.uk>

THE (MAIN) WALK - In summary:

Left out of the pub, walk to the edge of the village, down into the valley and along a stream, then climb back up to the other end of the village.



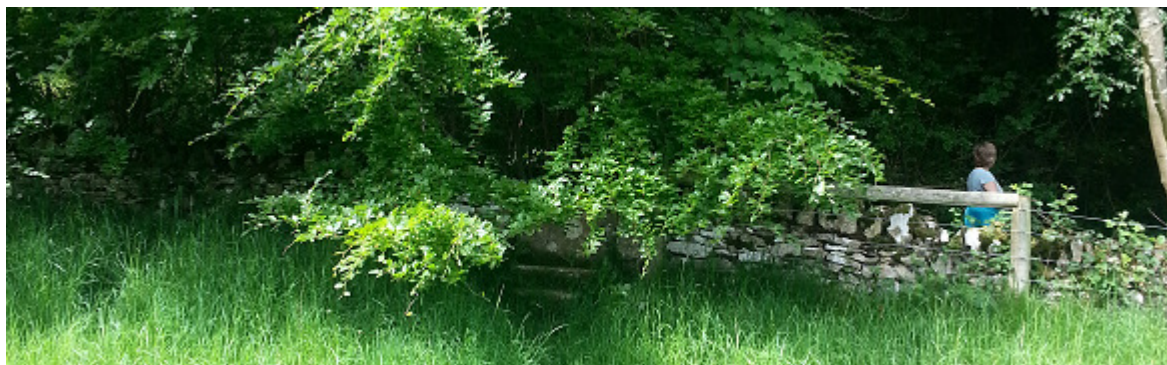
In detail:

- Turn left out of the pub car park
- Turn left at the covered circular bench around a huge tree
- After a hundred yards you walk past the village church

The church is a mixture of Saxon and Norman architecture. A priest was recorded at Miserden in 1086 and architectural evidence shows that the church there is of pre-Conquest origin. The nave is believed to be of the 11th century and retains the outlines of the original round-headed north and south doorways. The chancel is 12th-century. Anglo-Saxon remains clearly visible are the rounded arch and carved imposts of the doorway. The War Memorial opposite the Lychgate is by Sir Edwin Lutyens (1869-1944) who is often referred to as the greatest British architect, originally making his name designing country houses (including Castle Drogo in Cornwall and the re-design of Lindisfarne Castle – and also The Cenotaph in Whitehall) before becoming chief architect of New Delhi when it was to be the seat of the British government in India. He designed some aspects of Miserden Park. See <http://www.lutyenstrust.org.uk>

- After visiting church, go back onto the road and continue in the original direction
- Continue past the shop, village hall and school
- **Turn right** at Public Footpath sign at edge of the village, opposite school car park; climb over stone stile
- **Follow the path along the right side of the field** following the line of the woods
- **At the end of the woods, go through a wooden gate on your right**

- Turn left and follow the fence on your left, the valley drops away to your right
- Climb over a stile by a wide gate
- The track then goes through the middle of the field, some woods are on your right now
- When you crest the rise footpath heads to right & down (forking right away from farm track) leading to a stone stile in a Cotswold stone wall under some low hanging branches (difficult to see from top of rise)



- Follow path straight ahead, do not follow the track that leads left or right along the line of the wall
 - The path goes uphill steeply through the trees and then after 50-100 yds you emerge from the woods
 - Turn right onto the gravel track
 - Go through a gateway and continue straight on, the track becomes a concrete surface for a while
 - A little way further on, the track becomes a tarmac road (this is one of the roads through Misarden Park and is only used by park vehicles);
 - The road goes downhill & then around to the left behind some farm buildings (dog kennels) to a house
 - Shortly after/behind the kennels, fork right off the road, following the Public Footpath sign down a narrow path across the grass to the valley and the woods
 - Go through a gate (actually a drag fence) and then ...
 - Turn right to follow the stream down the valley along a farm track
 - The path diverges from the stream slightly and goes up a little; just after cresting the rise, fork right
 - After 25yds there is a waist-high wooden Public Footpath post with 3 signs (opposite a sign for Calley Wood), you should turn right here and follow a narrow footpath through the woods
 - * At this post with 3 signs you can connect to the Caudle Green walk in booklet 4 if you want a longer walk*
 - Follow the path downhill, cross the bridge over the stream (built from two railway sleepers)
 - Clamber up the steep bank straight ahead (there is a yellow arrow painted on a tree)
 - At the top of the bank there is another yellow arrow painted on a big fat tree – go to the right of the tree, continue straight ahead and then veer right
 - Go over a wooden stile and head diagonally left across an undulating field, aiming for a telegraph pole (with a yellow sign) on the far side; the path is not clear, but just continue across the grassy field
 - Ahead and to the left is a plantation of younger trees – follow the boundary fence up to the corner of the field where it meets a more mature wood
 - Turn left onto one of the tarmac park roads, the road starts to go downhill
 - Go straight on over the stream, through a gate in a Cotswold stone wall and start climbing back up to Miserden village; you are still on the tarmac road which bends to the left and then to the right; up, up, up (think of the pub which is at the top of the hill)
 - Go through the kissing gate at the top of the hill and continue straight ahead into the village
 - After a hundred yards the pub will appear behind the circular bench around the large tree
- The End.*** Any problems with these directions? Email me at rod@rrgordon.com (also if you liked the walk!)

RR Gordon is the best-selling author of **Gull Rock**

#1 in Crime, Thrillers & Mystery bestseller list on Amazon

We hope you enjoyed this book of Cotswolds walks - you may also wish to read the novels by RR Gordon:

Gull Rock: *What would you do if you needed to disappear after stealing a million pounds? Unfortunately you don't have the money anymore, which makes it a bit trickier. Dan Lawrie's solution is to move around, working a few days in each place in exchange for food & lodging. His itinerant lifestyle leads him to North Cornwall where unfortunately he gets stuck - and the reason is a girl by the name of Sophie. And while Dan stands still, the man who is chasing him is getting closer and closer.*

RR Gordon has also published two novels set in the Cotswolds:

Meaningless – a modern-day parable of a normal man struggling to find his way in the world

Brenscombe – a post-apocalyptic story of one family's fight for survival

All books are *only* available as e-books for the Kindle or other e-readers.

For further details go to www.rrgordon.com or search for "RR Gordon" on Amazon.

The Parsnip Inns Group



The Falcon commands the most wonderful position in the picturesque town of Painswick, the vibrant heart of the Cotswolds.

11 ensuite rooms
Restaurant & Bar
Function Room
Private Car Park

Open each day from 8am to 11pm
Food Served Lunch Mon-Sat 12pm-2.30pm,
Sun 12pm-3pm
Dinner Mon-Sat 6.30pm-9.30pm, Sun 6.30pm-9pm

The Falcon, New Street, Painswick
Gloucestershire GL6 6UN
Tele: - 01452 814222
Mail: - info@falconpainswick.co.uk
www.falconpainswick.co.uk



A traditional Cotswold Village Pub and Restaurant in the quaint village of Bisley.

Bar & Restaurant
Private Dining
Private Car Park

Open Tuesday to Sunday from 10am to 11pm
Food Served Lunch, Tues-Sat 12pm-2.30pm,
Sun 12pm-3pm
Dinner Tues-Sat 6.30pm-9.30pm
Closed Sunday Night and All Day Monday

The Stirrup Cup, Cheltenham Rd, Bisley
Gloucestershire, GL6 7BL
Tele: - 01452 770007
Mail: - info@thestirrupcup.com
www.thestirrupcup.com



GARDEN *Solutions*

Garden Design
Paving & Driveways
Decking
Drystone Walling

Turfing & Lawns
Water Features
Planting
Conservatories

10 year guarantee on your materials; 5 year installation guarantee

Call 01453 767 149 today

for a free consultation

T: 01453 767 149 | M: 07725 609 945

Denvio, Lightwood Lane, Randwick, Stroud GL6 6JL

gardensolutions@hotmail.co.uk

www.landscapinggloucestershire.co.uk

"we were delighted with the work that you have done"

AYS Executive Chauffeur

AYS Executive Chauffeur Hire are proud to provide reliability and comfort to all of our clients. Business & personal trips. Corporate & sporting events. Airport transfers.

Highclere, Cirencester Rd. Birdlip, Gloucester GL4 8JL
Telephone. 01452 864726 Mobile. 07767 236797

mail@ayschauffeurs.com
www.ayschauffeurs.com



*Do you enjoy meeting people,
caring for animals, visiting new places?*

**Why not join the team at Ticketyboo and
become a Housesitter in the beautiful Cotswolds?**

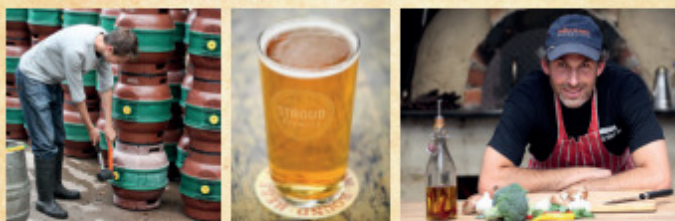
If you are responsible, energetic and reliable please contact us...

call Susan Jackson 01452 790104

www.ticketyboo-housesitters.co.uk info@ticketyboo-housesitters.co.uk



STROUD BREWERY



BAR ❁ SHOP ❁ PIZZA ❁ MUSIC

Thursday 5-11pm ❁ Friday 3-11pm

Saturday 3-11pm

Phoenix Works ❁ London Road ❁ Stroud ❁ 01453 887122

❁ Kids 3-8pm only: excessive cackling likely thereafter